

RISK

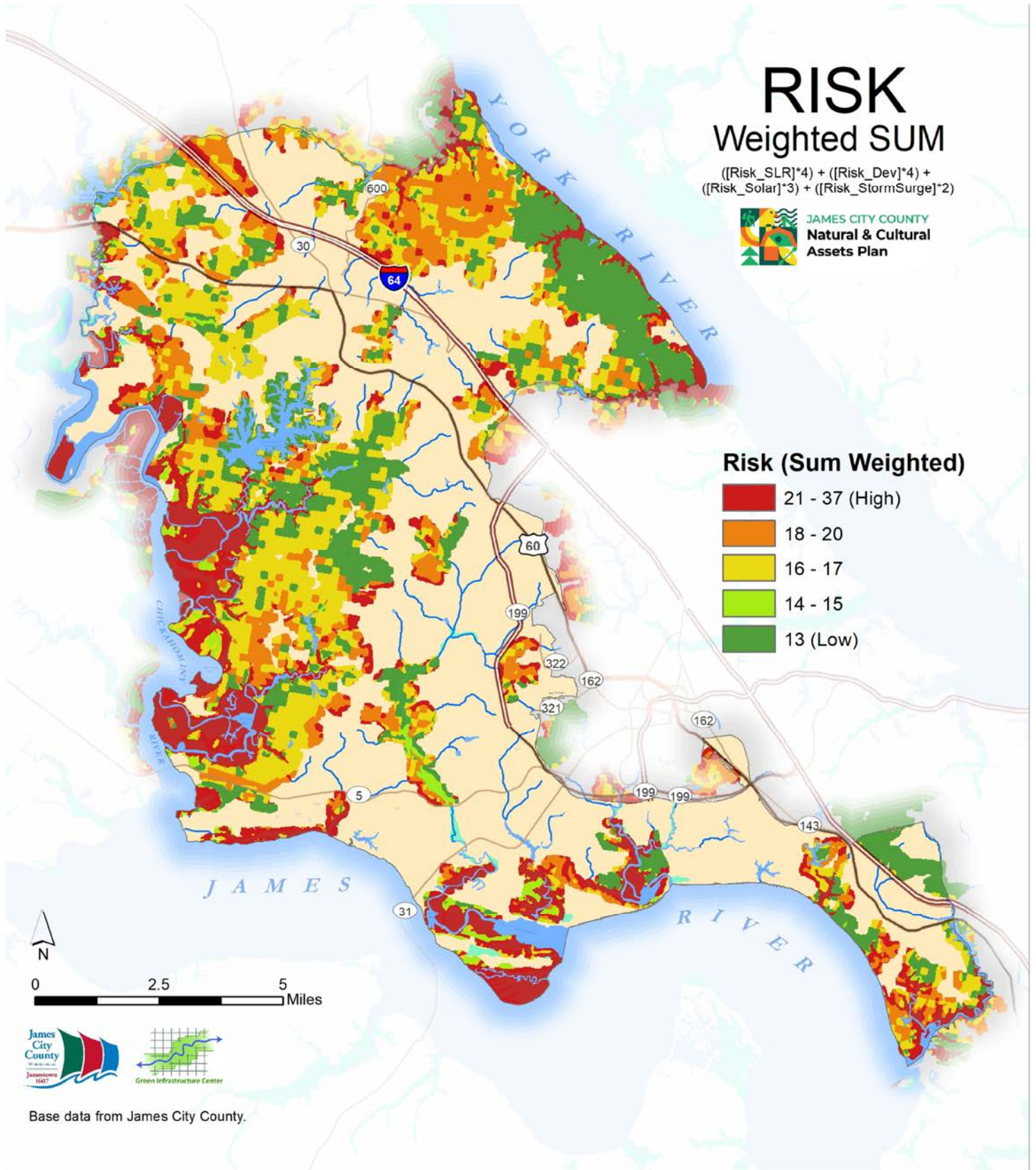
Weighted SUM

$$((\text{Risk_SLR})^4) + ((\text{Risk_Dev})^4) + ((\text{Risk_Solar})^3) + ((\text{Risk_StormSurge})^2)$$



JAMES CITY COUNTY
Natural & Cultural
Assets Plan

Risk (Sum Weighted)



Base data from James City County.